

# RELAYS & CONTACTORS



## UNIVERSAL VOLTAGE POWER RELAYS 400 SERIES

**PELTEC**  
Timers

A division of Pelco Component Technologies

**NEW!**



Peltec 4116U



### DESCRIPTION

The Peltec **400 Series** universal voltage power relays can be used in HVAC, motor controls, lighting systems, and pump controller applications. The output indicator is intensified by lens.

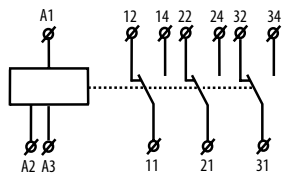
### FEATURES

- *Coil is diode-suppressed*
- *DIN rail mount for easy installation*
- *Red LED is standard*

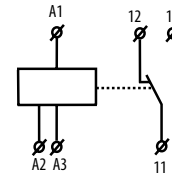
### SPECIFICATIONS

<b>Input Voltage</b>	12-240 VAC/VDC	<b>Inrush Current</b>	30 Amps / <3s
<b>Frequency</b>	50/60Hz	<b>Operating Temperature</b>	-4° to 131°F (-20° to 55°C)
<b>Input Terminals</b>	A1-A3	<b>Visual Indication Color</b>	Red LED standard
<b>Relay Output Form</b>		<b>Mechanical Life</b>	30 million operations
<b>4116U</b>	SPDT	<b>Mounting</b>	DIN rail
<b>4308U</b>	3PDT	<b>Wire Size</b>	14AWG
<b>Rated Current</b>		<b>Weight</b>	0.25 lb (0.12 kg)
<b>4116U</b>	16 Amps/AC	<b>Approvals</b>	UL Listed File #E352333, CE, RoHS
<b>4308U</b>	8 Amps/AC	<b>Warranty</b>	1 Year

### WIRING



**4308U**



**4116U**

### ORDERING INFORMATION

MODEL	DESCRIPTION
<b>4116U</b>	RELAY, 16A SPDT, UNIVERSAL VOLTAGE AC/DC, DIN RAIL
<b>4308U</b>	RELAY, 8A 3PDT, UNIVERSAL VOLTAGE AC/DC, DIN RAIL